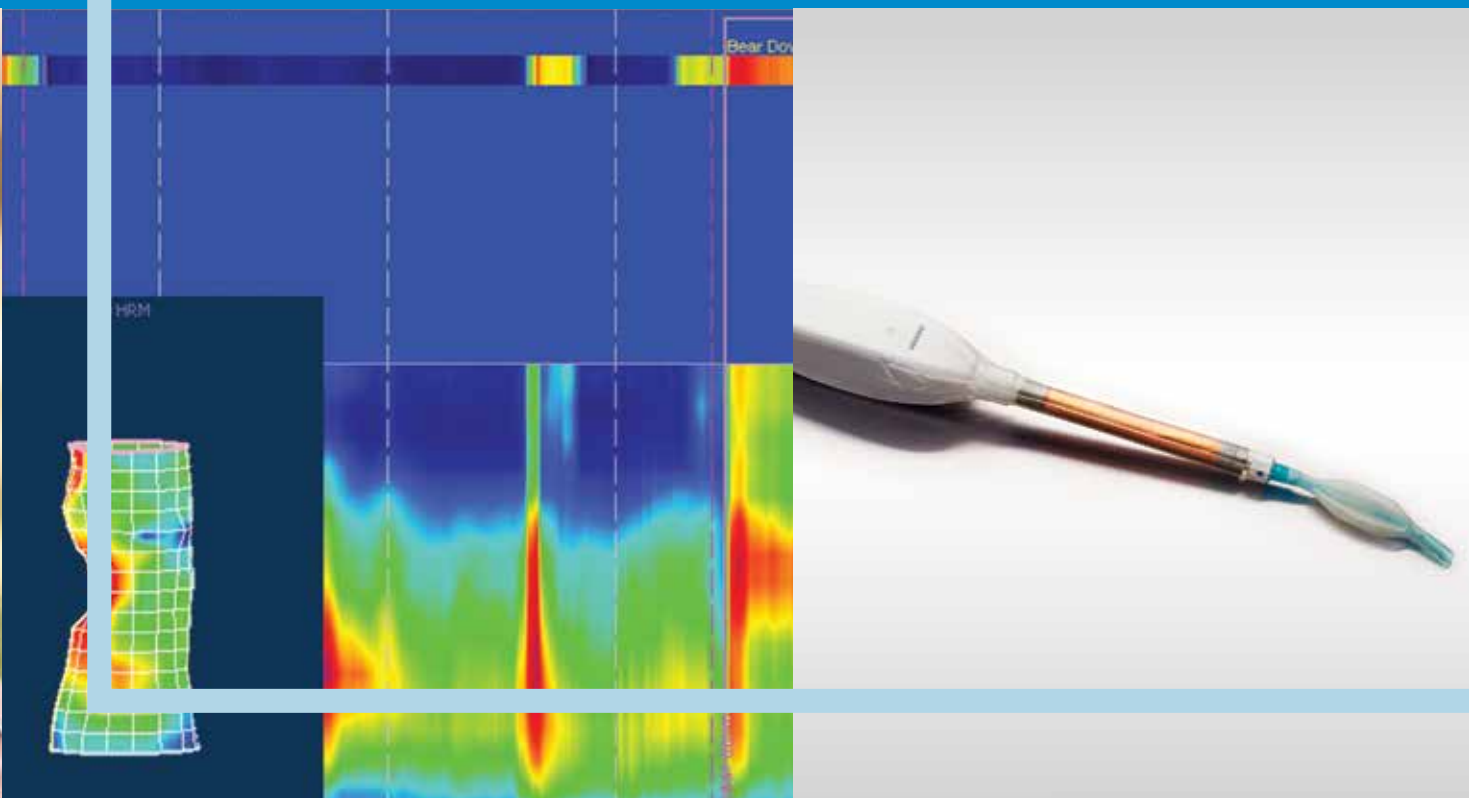


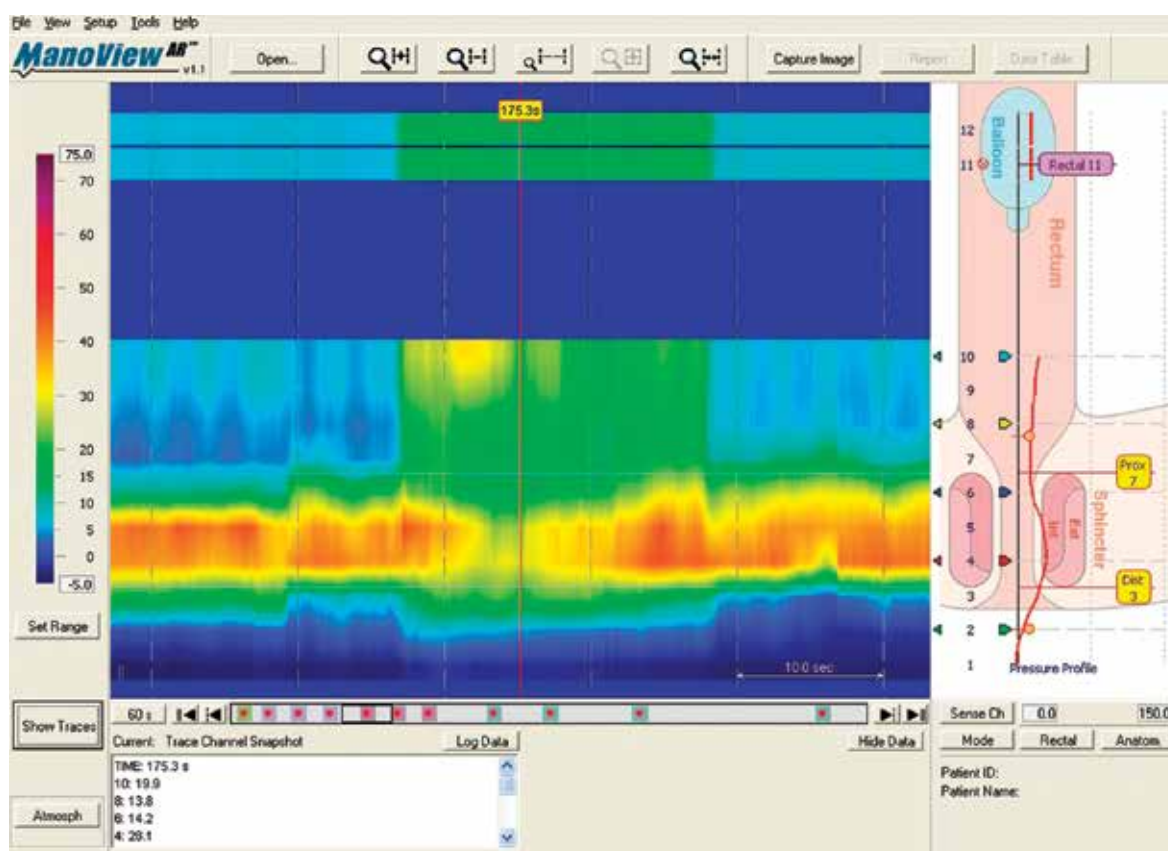
# MANOSCAN™ AR ANORECTAL MANOMETRY SYSTEM



# ManoScan™ High Resolution Manometry Diagnosing with definition

## ManoScan™ AR

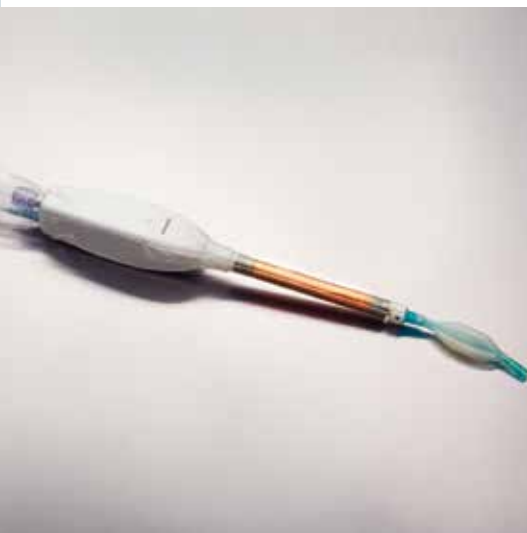
ManoScan™ AR provides a comprehensive assessment of the pressure activity of the rectum and anal sphincters with a single catheter placement. This advanced diagnostic technology allows physicians to evaluate patients with impaired defecation. The procedure is easy for the clinician to perform and is more patient-friendly than conventional manometry.



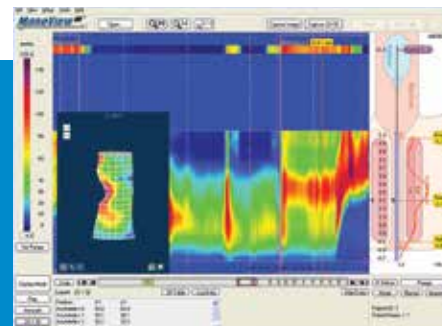
- Anorectal HRM can assess and quantify normal reflex pathways as well as the relax, squeeze, and bear down functions of the anal sphincter muscles and rectum
- Anorectal HRM identifies patients who can benefit from biofeedback therapy
- Preferred method for defining the functional weakness of the anal sphincter and for the diagnosis of dyssynergia and abnormal rectal sensation

## ManoScan™ AR 3D

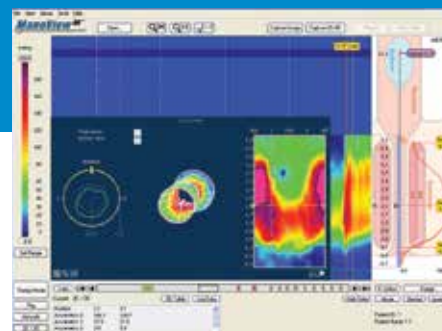
ManoScan™ AR 3D provides a three-dimensional physiological map of the anal sphincter, enabling the clinician to assess function and visualize symmetry with a single placement of a probe. Three-dimensional imagery, combined with topographical mapping, allows for a better understanding of the anorectal anatomy for increased diagnostic confidence.



ManoScan™ AR 3D Probe



3D AR Asymmetric Anterior Pressure



3D AR Analytics

## The Biofeedback Application is a Key Component in Evaluating Pelvic Floor Dysfunction

The Biofeedback Application is designed to be used by physicians and biofeedback therapists in cases of incontinence, constipation, voiding disorders, and pelvic pain. The system uses a Polygraf ID™ multi-parametric recorder (A500 module) and EMG or pressure sensors to display and record a patient's pelvic floor muscle activity during sequences of squeezing and relaxing maneuvers.

- Patient-oriented for best results incorporating flexible track programming for progress monitoring and immediate review of patient progress
- Fully configurable for individual needs including user-defined graphics for both adult and pediatric patient populations



Pediatric Biofeedback

## Full Featured Workstation

- Portable trolley system
- LCD flat panel touchscreen with articulating arm
- Modular data acquisition controller
- Windows®-based operating system
- LAN connection and WiFi enabled
- Integrated catheter auto-calibration system
- Built-in storage drawer
- Large lockable wheels
- Patient isolation transformer
- High speed quality printer

## ManoScan™ Software

**ManoView™ software provides an intuitive suite of manometry study tools enabling physicians to effectively identify motility disorders.**

- Advanced tools yield precise measurements and comprehensive data analysis
- High resolution and conventional displays provide versatile and complete motility visualization
- ManoView™ software can be installed on any Windows®-based computer enabling clinicians to review studies remotely



## ManoScan™ Catheters and Probes

### ManoScan™ HRM Catheters

**ManoScan™ HRM catheters incorporate the very latest advancements in sensing technology.**

- ManoScan™ HRM catheters work with ManoShield™ disposable sheaths to minimize the risk of cross-contamination
- With 12 channels providing 144 points of measurement, the ManoScan™ AR probe provides the highest resolution of any available manometry system
- ManoScan™ AR 3D probes feature 256 points of measurement generated by 16 axial x 16 circumferential sensors



ManoScan™ AR Catheter

ManoShield™



### ManoShield™ Disposable Catheter Sheath

**Micro-thin disposable design creates a protective barrier between the catheter or probe and the patient to enhance patient safety during HRM procedures.**

- Creates more efficient workflow and minimizes catheter deterioration by significantly reducing the need for cleaning and disinfecting between procedures
- Minimizes the risk of cross-contamination, helping clinicians comply with health care patient safety requirements
- ManoShield™ sheath design for anorectal procedures incorporates rectal compliance balloon

## Diagnosing with Definition

**“ManoScan™ has transcended the art of manometry. Its diagnostic utility is greatly enhanced by the software tools and catheters. As a result, procedure times are greatly diminished. These factors result in the acquisition of high quality manometric information obtained in a manner that is user-friendly while maximizing patient comfort.”**

**Laura Haroian, MSN**

Coordinator Specialty Procedures  
Missouri Baptist Medical Center



[medtronic.com](http://medtronic.com)

PILLCAM, PILLCAM & Logo, PILLCAM IMAGING CAPSULE & Design, AGILE, RAPID, RAPID ACCESS, ORDERWIN, FINGERS HOLDING A CAPSULE & Logo, FINGERS HOLDING PILLCAM CAPSULE & Logo, ICCE, ICCE Logos, International Conference on Capsule Endoscopy, BRAVO, BRAVO PH SYSTEM, ENDONETICS, VUESPAN, VERSAFLEX, GEROFLEX, REPHLUX TRACER, GASTROTRAC, BILITEC, DIGITRAPPER, PHERSAFLEX, MANOSCAN, MANOSCAN 360, MANOSCAN Z, MANOSCAN 3D, MANOSCAN HD, MANOSCAN V, MANOSHIELD, MANOSHIELD AR, MANOVUE, MANOVUE Z, ACCUTRAC, ACCUTRAC Z, ACCUVIEW, ACCUVIEW Z, ION, INSERTASSIST, BOLUSVIEW, and POLYGRAFID are Trademarks and/or Registered Trademarks of Medtronic.  
© 2015 Medtronic. All rights reserved. Medtronic, Medtronic logo and Further, Together are trademarks of Medtronic.  
All other brands are trademarks of a Medtronic company. EU-15-448850

**Medtronic**  
Further. Together