

MORE DETAIL,
MORE EFFICIENCY,
MORE CONFIDENCE.

PillCam™ SB 3 System
Advanced imaging and visualization of the small bowel

Medtronic
Further, Together

A breakthrough capsule endoscopy solution

The PillCam™ SB 3 system supports greater diagnostic confidence when assessing conditions of the small bowel.

This system addresses clinical demands for more detailed images, more tissue coverage, and more efficient interpretation than the previous generation. This helps physicians make a difference in patients' lives through early detection of GI conditions.



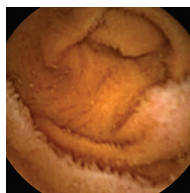
More detail

The optics and imager in the PillCam™ SB 3 capsule have been redesigned and optimized to deliver exceptional images. Results include:

- **A 30% improvement in resolution** quality over previous generations of PillCam™ capsule endoscopy systems
- Higher survey rankings. **100% of GIs** surveyed rated the system higher than that of the previous generation. Image sharpness, natural tissue colors, balanced illumination, and overall image quality were all considered*
- **Greater diagnostic confidence** due to improved imaging

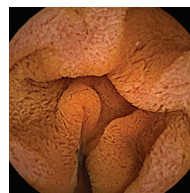
Improved overall image quality

PillCam™ SB 2 system



Normal villi

PillCam™ SB 3 system

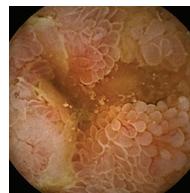


Normal villi

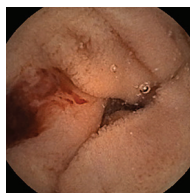
PillCam™ SB 3 system images



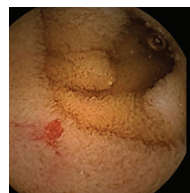
Normal ampulla



Edematous villi



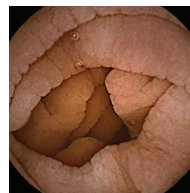
Bleeding



AVM



Ulcer



Edematous villi

*RD-304 Clinical Validation Study comparing PillCam™ SB 3 system to PillCam™ SB 2 system, 2012.

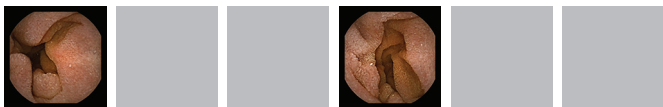
More coverage

The PillCam™ SB 3 system optimizes tissue coverage by employing adaptive frame rate technology. This allows for:

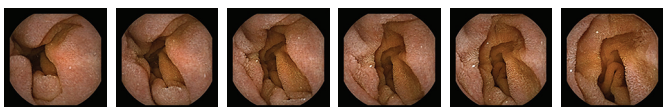
- The system to determine when the capsule is moving quickly
- The image capture rate to automatically increase from **2 to 6 frames per second**. This accounts for faster rate of movement
- Image acquisition — **supported by dynamic technology** — that is uniquely suited to each patient's motility

Adaptive frame rate technology

SLOW capsule speed - two frames per second



FAST capsule speed - six frames per second



← ~ 1 second →

When the capsule moves rapidly, the frame rate is automatically adjusted from 2 to 6 frames per second. This provides a more complete and detailed visualization.

More efficiency

The PillCam™ SB 3 system combines innovative capsule technologies with our most advanced software to support an efficient study review. Features include:

Features include:

- Proprietary software algorithms. Enables smarter video compilation that is **40% more efficient** than with the PillCam™ SB 2 system*
- Time savings. Helps reduce the time you need to review and interpret your capsule endoscopy studies**
- **Improvements efficiency**. Supports more timely diagnosis and helps you move patients closer to effective treatment.

More detail
and more
coverage

+

Smarter
video
processing

=

40%
more efficiency*

It's easy to upgrade

With a global team of support professionals, Medtronic will work with you to facilitate a smooth transition to the proven benefits of the PillCam™ SB 3 system.

*RD-304 Clinical Validation Study comparing PillCam™ SB 3 to PillCam™ SB 2, 2012.
**Compared to PillCam™ SB 2 System. Reference: RD-30 PillCam™ SB 3 system.
Data on file. January 15, 2013



Taking GI care further, together

Medtronic is proud to partner with you as we work towards our shared goal of better management of small bowel conditions. We're dedicated to helping you obtain a more comprehensive view, so you have the actionable information you need to assess, treat, and monitor your patients.

Visit us at [medtronic.com/gi](https://www.medtronic.com/gi)



Caution: Federal law restricts this device to sale by or on the order of a licensed healthcare practitioner. Rx only.

Important Information: The risks of PillCam™ capsule endoscopy include capsule retention, aspiration, and skin irritation. The risks of the PillCam™ patency capsule include capsule retention and aspiration. Endoscopic placement may present additional risks. Medical, endoscopic, or surgical intervention may be necessary to address any of these complications, should they occur. After ingesting either the PillCam™ SB or PillCam™ patency capsule, and until the capsule is excreted, patients should avoid sources of powerful electromagnetic fields. These include those created by MRI devices. Passage of an intact patency capsule does not preclude the presence of an intestinal stricture or other pathology. Please refer to the product user manual or [medtronic.com/gi](https://www.medtronic.com/gi) for detailed information.

US150712(1) © 2018 Medtronic. All rights reserved. Medtronic, Medtronic logo and Further, Together are trademarks of Medtronic. All other brands are trademarks of a Medtronic company.

Medtronic